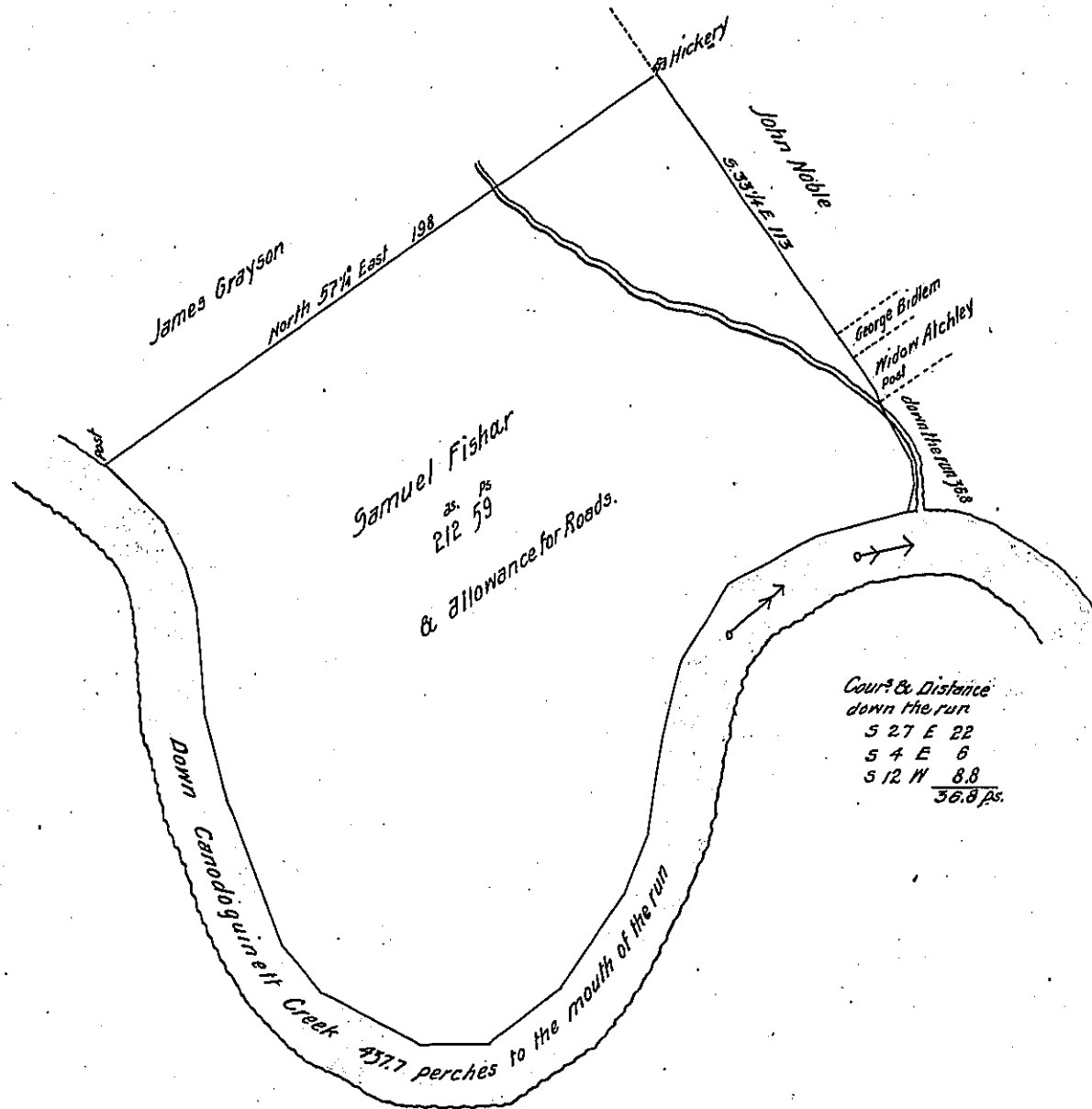


*Cour^s & Distance
along the Creek*

S 76 1/2 N 28 -
S 63 1/2 N 29 -
S 33 1/2 N 26 -
S 15 N 24 -
S 11 1/2 N 27 -
S 25 N 19 -
S 34 1/2 N 34 -
S 55 1/2 N 27 -
N 88 N 20 -
N 60 1/2 N 33.4 -
N 37 1/2 N 18 -
N 19 1/2 N 43.5 -
N 12 1/2 N 25 -
N 2 N 31 -
N 14 N 12 -
N 25 1/2 N 14 -
N 45 1/2 N 24.8 -
437.7



*Cour^s & Distance
down the run*

S 27 E 22
S 4 E 6
S 12 N 8.8
36.8 ps.

Draught of a tract of land situate in Eastpennsboro Township Cumberland County containing two hundred and twelve acres and fifty nine perches and the usual allowance of six per cent for roads Surveyed December the 27th Anno Domini 1821 in pursuance of a Warrant granted to Saml Fisher dated the 30th day of October Anno Domini 1745

*To Samuel Cochran Esquire
Surveyor General*

*Samuel Rosby
D.D.*

IN TESTIMONY that the above is a copy of the original remaining on file in the Department of Internal Affairs of Pennsylvania, made conformably to an Act of Assembly approved the 16th day of February, 1833, I have hereunto set my Hand and caused the Seal of said Department to be affixed at Harrisburg, this

sixteenth day of *January* 1906.
Geo. B. Rosby
Secretary of Internal Affairs.